

BREL motors is part of:

**BREL** nederland b.v.

## Manual Brel 24mm electronic DC radio motor single shaft

### Type MJE24S

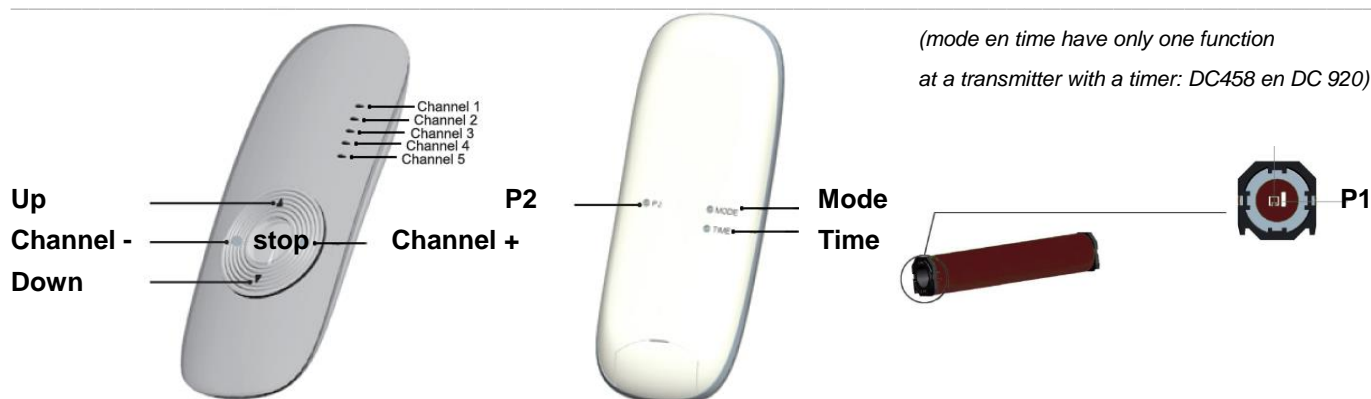
**Read the manual before you begin the installation. If these instructions are not followed, this may lead to defects and injury in which there can be no claim on the warranty.**

#### warning:

Children cannot recognize the dangers of electrical equipment and may therefore not work with it.

**It is important to follow this instruction for your own safety.**

1. Do not operate the motor in humid environments.
2. The motor must be installed correctly.
3. Keep the antenna in a good condition and do not shorten. The antenna should not come into contact with other metal parts otherwise it will reduce the power.
4. The motor must be protected from direct moisture influences.



*If you are using a multi-channel transmitter, you cannot program on the shared channel.*

#### Technical data of the motor

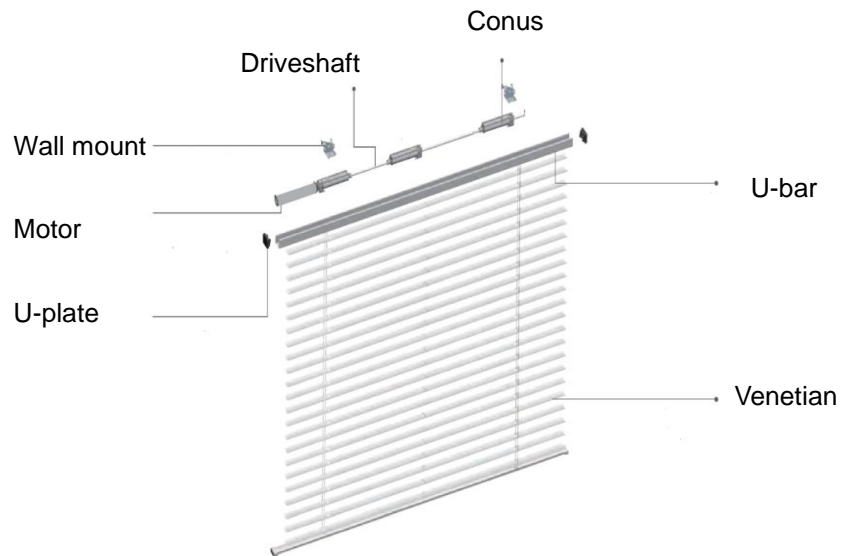
- Motor Voltage: DC 12V
- Maximum ampère charger: 1.0 A
- Power: 6.8 Watt
- Torque: 0.6 Nm
- Speed: 34 rpm
- Ampèrage: 0.57 A
- Moisture and dust: IP40
- Storage capacity is up to 20 channels
- Working temperature of the motor:
  - Normal use: -10°C tot +40°C
  - Heavy use: -20°C tot +70°C

#### Type MJE24S

DC 12V  
1.0 A  
6.8 Watt  
0.6 Nm  
34 rpm  
0.57 A  
IP40



## Installing the motor



### Step 1 Setting up the first channel

The read-in of the first transmitter can be used in two ways:

#### Option A

Put power on the motor, for example, by the battery. The motor moves momentarily.

Press 2x P2 for 5 sec. and release.

Each time the motor moves momentarily.

Press the button up.

The motor moves momentarily. The direction of rotation is right, go to step 3. If the direction of rotation is wrong, go to step 2.

#### Option B

Press P1 1x and release when the motor moves momentarily.

Press 2x P2 for 5 sec. and release.

The motor moves each time momentarily.

Press the button up.

The motor moves momentarily. The direction of rotation is right, go to step 3. If the direction of rotation is wrong, go to step 2.

**With the above action deletes all the channels in memory and the final adjustment. You can also repeat this procedure to reset the motor.**

### Step 2 Change direction

If the direction is right, skip step 2 and proceed to step 3.

#### Option A

Put power on the motor, for example, by the battery. The motor moves **1x**

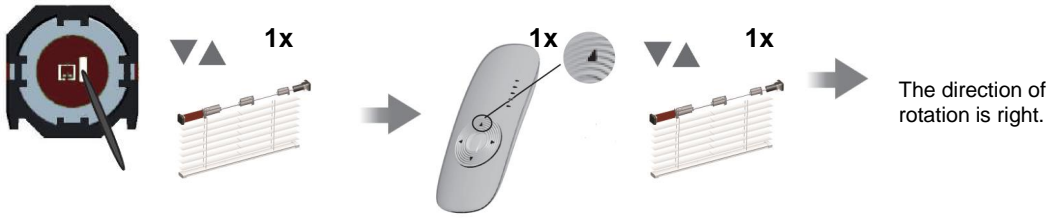
Press 2x P2 for 5 sec. and release.

The motor moves momentarily.

Press the button up.

The direction of rotation is right.

**Option B**

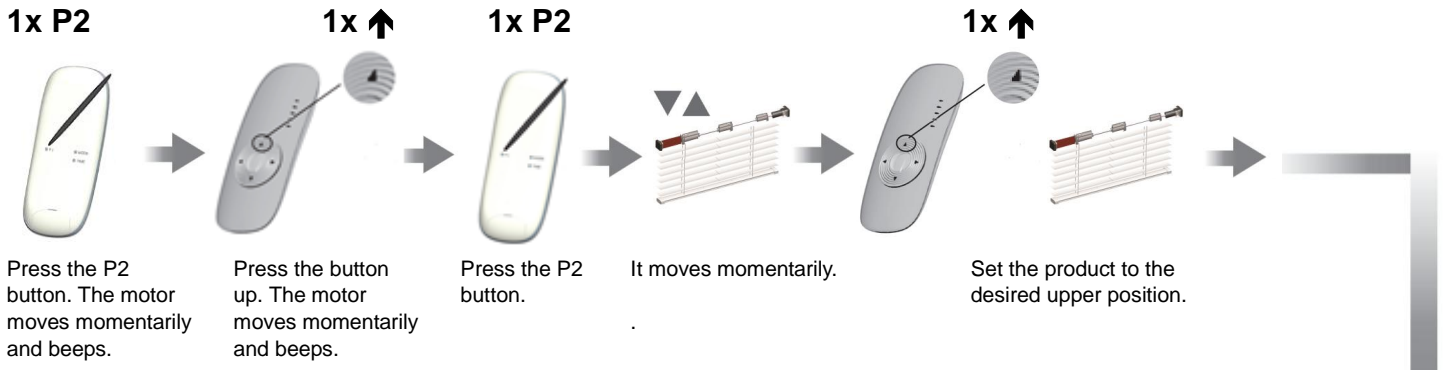


Press P1 1x and release when the product moves momentarily after 3 sec. and again after 6 sec. 1x.

Press the button up.

The product goes down.

**Step 3 Setting the end limits**



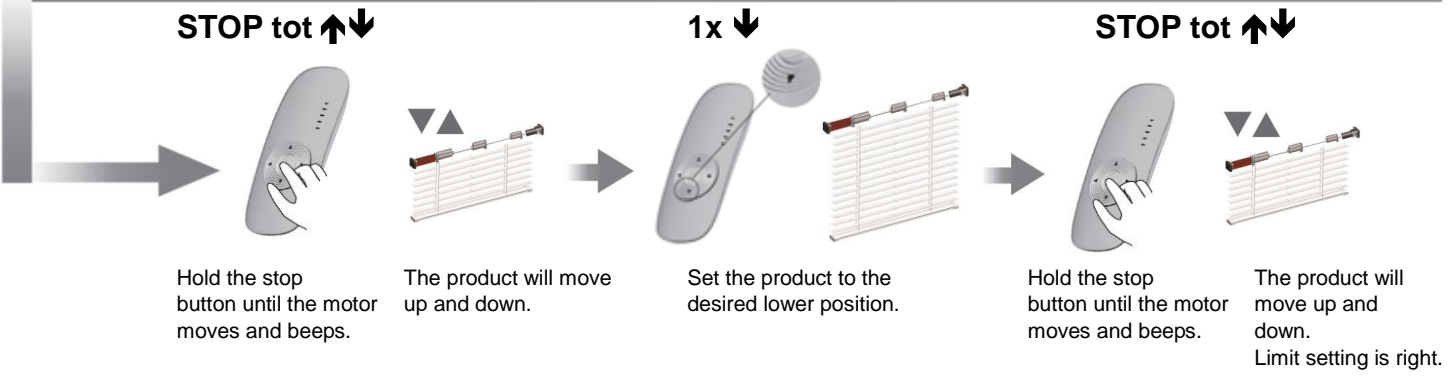
Press the P2 button. The motor moves momentarily and beeps.

Press the button up. The motor moves momentarily and beeps.

Press the P2 button.

It moves momentarily.

Set the product to the desired upper position.



**STOP tot** ↑↓

1x ↓

**STOP tot** ↑↓

Hold the stop button until the motor moves and beeps.

The product will move up and down.

Set the product to the desired lower position.

Hold the stop button until the motor moves and beeps.

The product will move up and down. Limit setting is right.

**Step 4 pairing new remote while maintaining end limits**

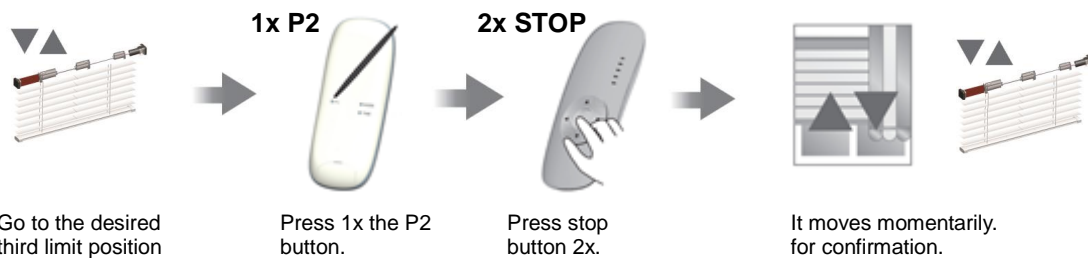


1x P1  
Press P1 and hold, until the motor moves up and down.

Press up and down buttons simultaneously, until the motor moves up and down.

## Step 5 Setting third limit position

If you press the stop button for more than 3 seconds, the motor will move from any position to the third limit position.



**To remove the third limit position, you must go to the third position and repeat above action.**

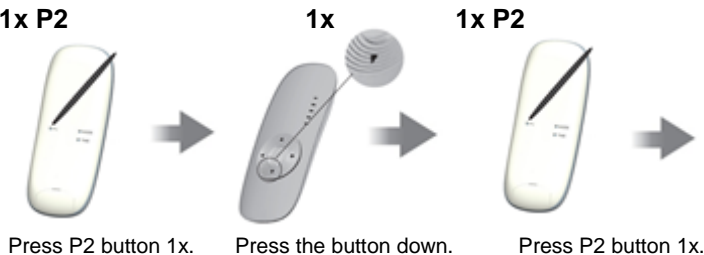
## Additional settings

### Option A Delete limit position

Deleting the limit position can be done in two ways:

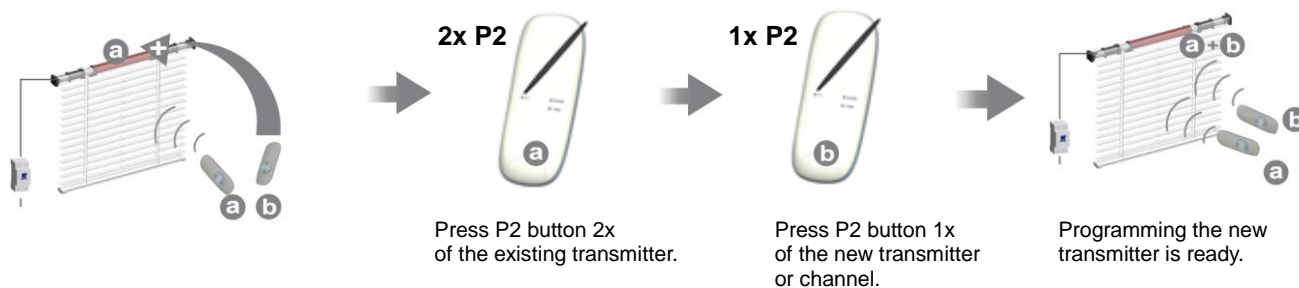
1. When setting up the first channel also the limit setup will be removed.

2. 1x P2



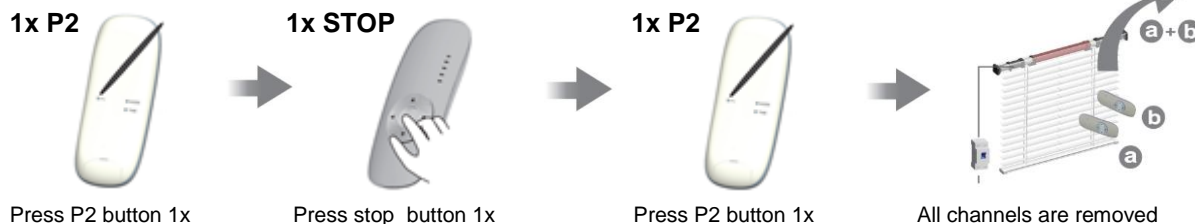
Each time you press a key you hear a beep.  
The limit positions are now removed from the memory.  
You can now re-read the limit position.

### Option B Teaching multiple transmitters (Up to 20 transmitters per receiver)

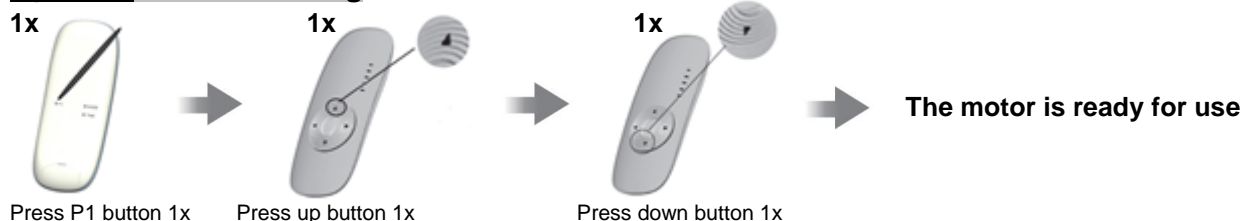


**To delete one channel, you must repeat the above operation.**

### Option C Reset all



### Option D Pulse setting



**To remove the pulse setting, repeat the above operation.**