

BREL motors is part of:

BREL nederland b.v.

Manual Brel 35mm silent electronic radio motor

Type MEQ35

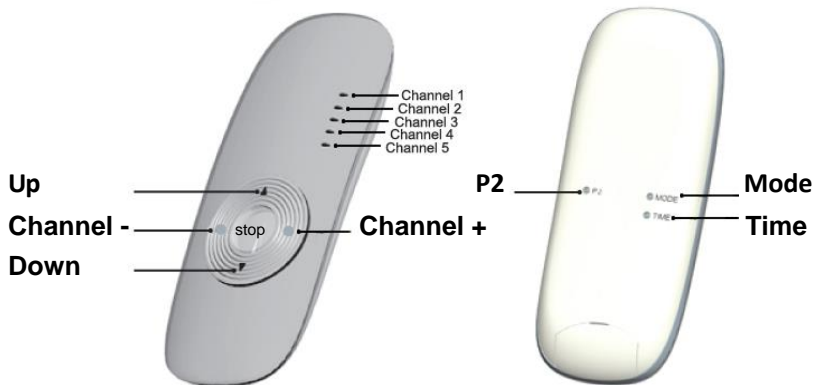
Read the manual before you begin the installation. If these instructions are not followed, this may lead to defects and injury in which warranty can't be claimed.

warning:

Children cannot recognize the dangers of electrical equipment and may therefore not work with it. **It is important to follow this instruction for your own safety.**

1. Do not operate the motor in humid surroundings.
2. The motor must be installed correctly.
3. Keep the antenna in a good condition and do not shorten. The antenna should not come into contact with other metal parts otherwise it will reduce the effect.
4. The motor must be protected from direct moisture influences.
5. The motor should be installed with the motor cable down in order to prevent moisture via the motor cable is running in the motor . **See Figure 1**
6. It is prohibited to connect two motors on a switch without using a relay control.

Figure 1



If in the 5 channel transmitter all the lights are lid. All the products are operated simultaneously. (mode and time have only a function on an emitter with a timer)

Technical data of the motor

- Motor Voltage:
- Power:
- Torque:
- Speed:
- Ampèrage:
- Moisture and dust:
- Storage capacity is up to 20 channels
- Working temperature of the motor:
 - Normal use: -10°C tot +40°C
 - Heavy use: -20°C tot +70°C

Type MEQ35-6/28

AC 230V
155 Watt
6 Nm
28 rpm
0.67 A
IP44

Type MEQ35-10/17

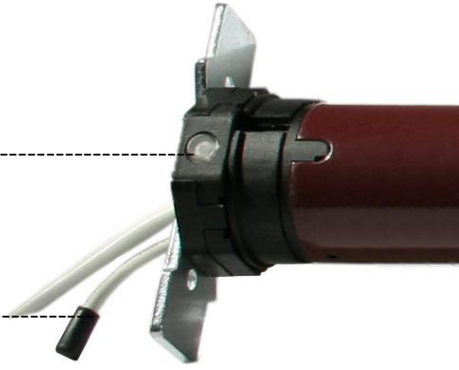
AC 230V
144 Watt
10 Nm
17 rpm
0.63 A
IP44



Functions

P1 button

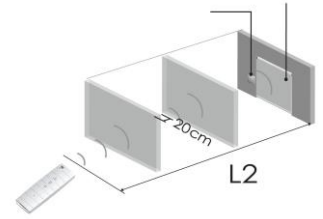
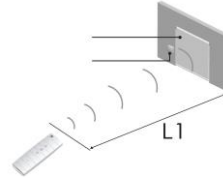
Antenna



Reach

L1 = 100 meter

L2 = 25 meter



Installing the motor

Attach the crown and wheel to the motor and place the clip on the shaft of the motor so that the wheel is fixed to the motor.

Install the motor with the motorbracket on the product and take care that it is secured.

Place the motor in the tube of the roller/shutter.

(These assemblies are usually already done in the factory)

During programming the motor the following must be done within 10sec.

After 10 sec. the motor will quit the programming mode.



EMERGENCY CONTROL: If a channel is connected to the motor, you can use the P1 key as control key.

Step 1 Setting up the first channel

3 sec. P1



2x P2



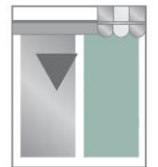
1x



The direction of rotation is right. Go setting the end limits, step 3.



The direction of rotation is wrong. Go to step 2.



Press the P1 button for 3 seconds and release. The motor moves momentarily.

Press 2x on the P2 button. Each time you press the button, it beeps and moves momentarily.

Press the button up. At the end you will hear 6 beeps.

With the above action you will delete all channels in memory and the final setting.

Step 2 Change direction

Option A If the direction is right, skip step 2 and proceed to step 3.

3 sec. P1



Press the P1 button for 3 seconds and release. The motor moves momentarily.

2x P2



Press 2x on the P2 button. Each time you press the button, it beeps and moves momentarily.

1x

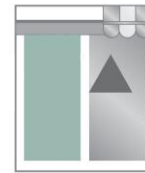


Press the button down. The motor moves. At the end you will hear 6 beeps.

1x



Press the button up.



The product will now go up. Reading the first transmitter has been completed. You can now proceed with setting the end limits.

Option B

6 sec. P1



Press for 6 sec. the P1 button until the motor moves 2x momentarily. Release P1.



The product moves momentarily 2x. The direction of rotation is changed.

Step 3 Setting the end limits

1x P2



Press the P2 button. The motor moves momentarily and beeps.

1x

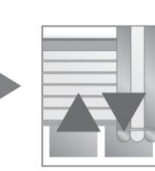


Press the button up. The motor moves momentarily and beeps.

1x P2



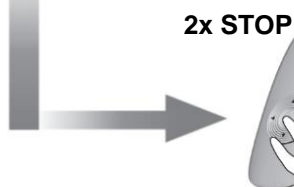
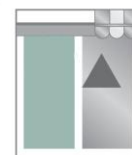
Press the P2 button. The motor beeps.



It moves momentarily.



Set the product on the desired top position.



2x STOP

Press 2x on the stop button until the motor beeps.



It moves momentarily.



Set the product on the end position.



2x STOP

Press 2x on the stop button until the motor beeps.



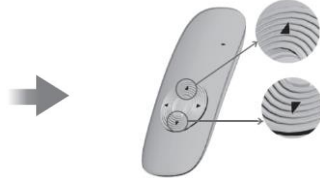
It moves momentarily. Limit setting is right.

Step 4 pairing new remote while maintaining end limits

1x P1



Press P1 and hold (beeps 1x), until the motor moves up and down.

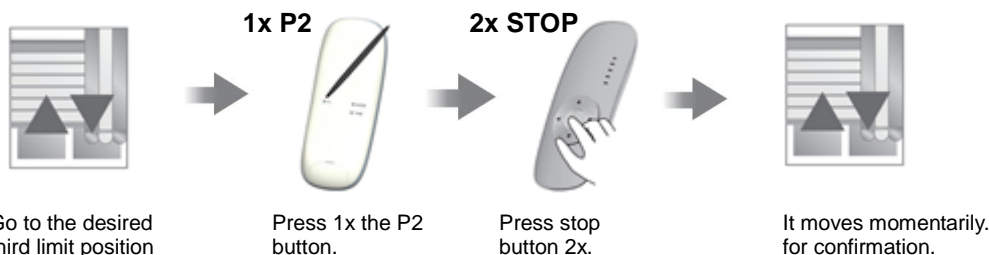


Press up and down buttons simultaneously (beeps 2x), until the motor moves up and down.



Step 5 Setting third limit position

If you press the stop button for more than 3 seconds, the motor will move from any position to the third limit position.



To remove the third limit position, you must go to the third position and repeat above action.

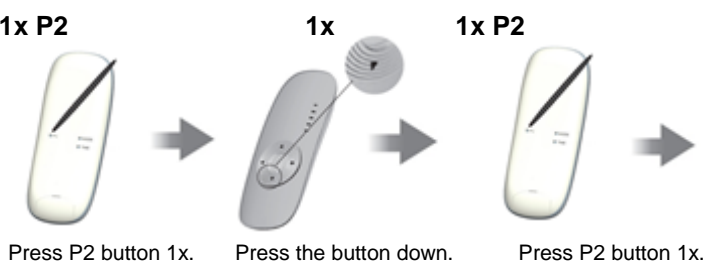
Additional settings

Option A Delete limit position

Deleting the limit position can be done in two ways:

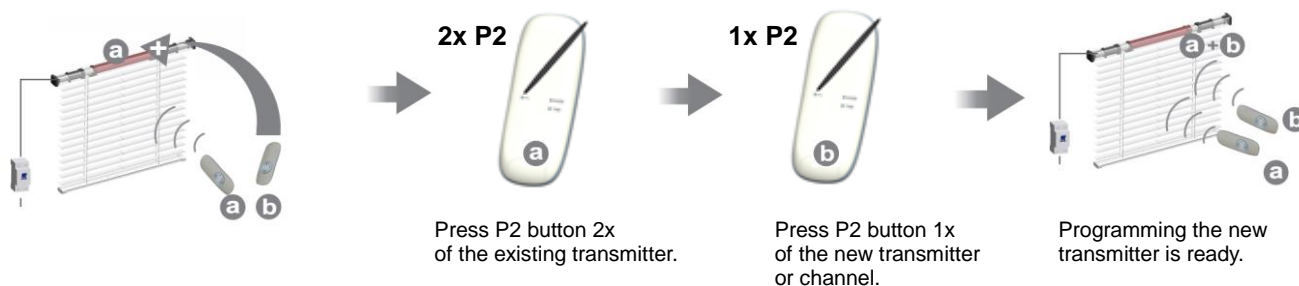
1. When setting up the first channel also the limit setup will be removed.

2. 1x P2



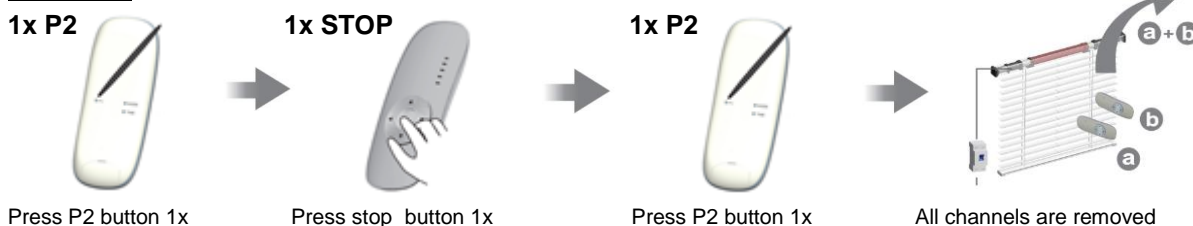
Each time you press a key you hear a beep.
The limit positions are now removed from the memory.
You can now re-read the limit position.

Option B Teaching multiple transmitters (Up to 20 transmitters per receiver)

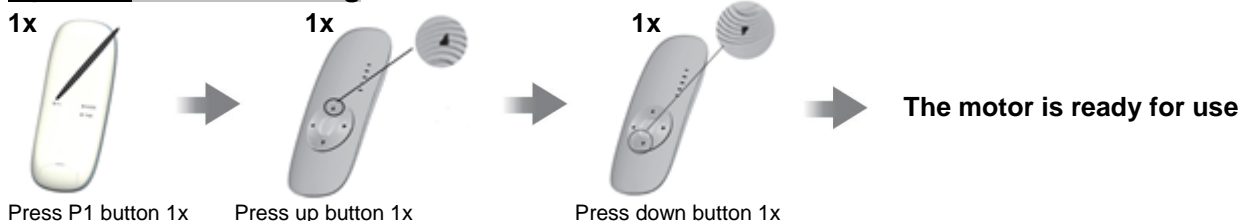


To delete one channel, you must repeat the above operation.

Option C Reset all



Option D Pulse setting



To remove the pulse setting, repeat the above operation.