

Manual Brel special bi-directional roller shutter motor

Type BRE45



Read the manual before you begin the installation. If these instructions are not followed, this may lead to defects and injury in which warranty can't be claimed.

warning:

Children cannot recognize the dangers of electrical equipment and may therefore not work with it.

It is important to follow this instruction for your own safety.

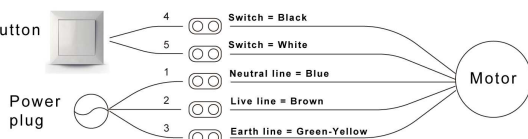
1. Do not operate the motor in humid surroundings.
2. The motor must be installed correctly.
3. Keep the antenna in a good condition and do not shorten. The antenna should not come into contact with other metal parts otherwise it will reduce the effect.
4. The motor must be protected from direct moisture influences.
5. BREL-Motors declares that this motor has been manufactured according to the guidelines of the CE standard 1999/5/EC.



Wiring

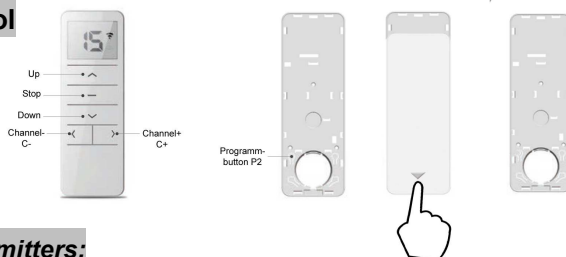
5 wires: 220V/60Hz; 230V/50Hz

Don't connect 230V! Pushbutton switch



Functions remote control

DD-2702H



Changing batteries



Works with all BREL transmitters:



Visit our website www.BREL-HOME.com for more manuals and information

Technical data of the motor

	BRE45-10	BRE45-20	BRE45-40
• Voltage:	230V	230V	230V
• Power:	112W	198W	198W
• Torque:	10Nm	20Nm	40Nm
• Maximum motor runtime:	4 min.	4 min.	4 min.
• Speed:	15rpm	15rpm	15rpm
• Amperage:	0.49A	0.69A	0.86A
• Safety class::	H	H	H
• Moisture and dust protection:	IP44	IP44	IP44
• Temperature reach :	Normal use:	-10°C tot +40°C	

NOTE: If the motor has been running continuously for 4 minutes, it may become too hot and then stop. After approximately one hour half an hour, this one will continue to run.

Scan the QR code here for the manual to download and view instructional videos



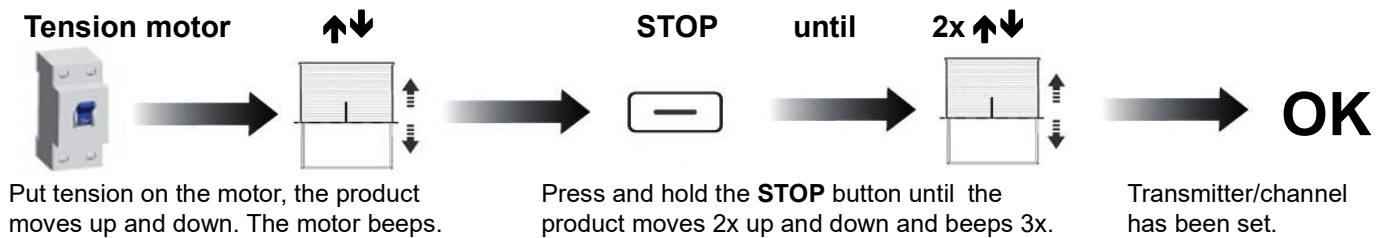
BRE45-10



BRE45-20



BRE45-40

Step 1 Setting up the first remote/channel

If **NO** end positions are set, the product will move in the pulse / step operation. Go then to **STEP 2**.

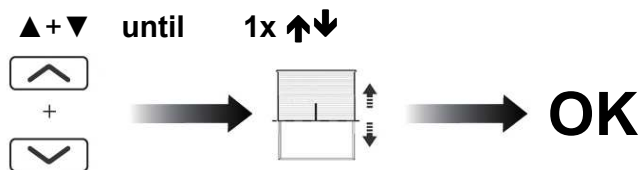
If end positions are set, the product will continue to its end position. Go then to **STEP 4**.



NOTE: It is possible that the correct end positions have **NOT** been set. Go to **OPTION A** manual adjustment or go to **OPTION B** and then to **STEP 3A** to automatically set the end positions.

Step 2 Adjusting the direction of rotation (Only if the direction of rotation is not correct)

Only possible if no end positions are set, otherwise first **option B** (Delete end positions), after that, **Step 2**.

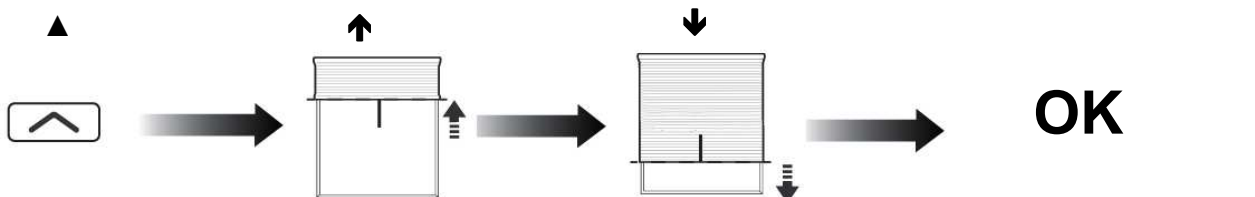


Press **UP** and **DOWN** button simultaneously, until the product moves.

The direction of rotation of the motor is **OK**.

Step 3A Automatically setting the end position

If no end positions have been set, the motor only moves in pulse mode.



Press the **UP** button, until the product moves to the desired top position and stops at resistance.

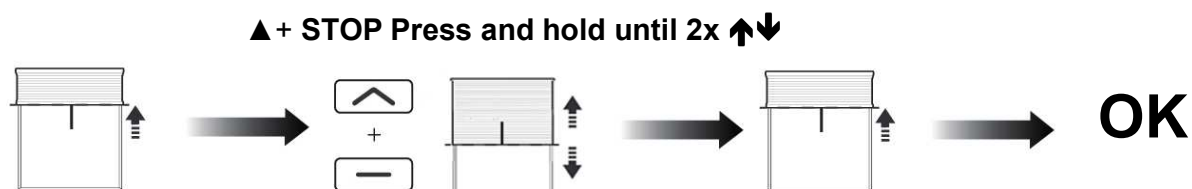
The product automatically goes down and stops in case of resistance.

The top- and down-position is set.

When the roller shutter has been up and down 50 times, the motor checks the end positions and adjusts them if necessary.

Step 3B Manually setting the end position.

If no end positions have been set, the motor only moves in pulse mode.

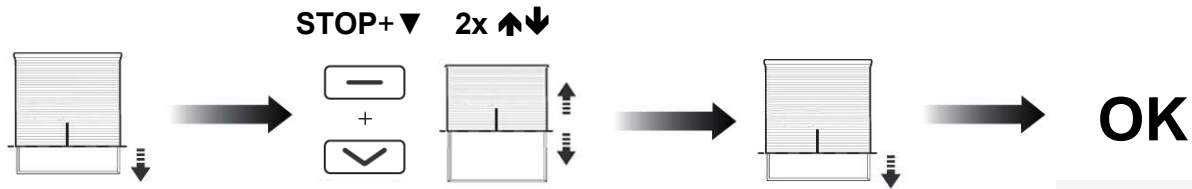
1. Set the desired top position.

Go with the **OPERATING-** buttons to the desired top position.

Press and hold the **STOP** and **UP** button until the motor moves up and down 2x and beeps 3x.

The desired top position is set.

2. Set the desired down position.

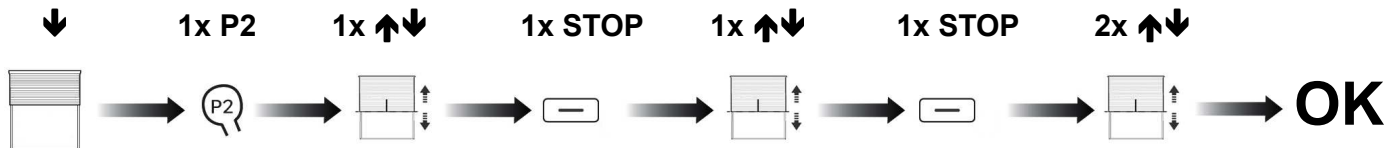


Go with the **OPERATING-** buttons to the desired down position.

Press and hold the **STOP** and **DOWN** button until the motor moves up and down 2x and beeps 3x.

The desired down position is set.

Step 4 Setting the desired third limit position (If desired)



Set the desired Third limit position.

Press 1x **P2**. The product moves 1x up and down and beeps.

Press 1x **STOP** button. The product moves 1x up and down and beeps.

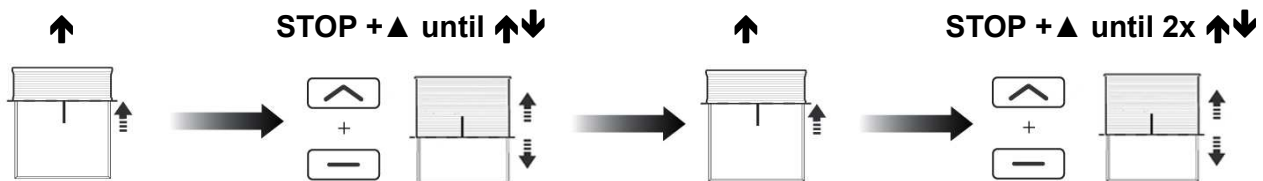
Press 1x **STOP** button. The product moves 2x up and down and beeps 3x for confirmation.

Press and hold STOP for 3 seconds to move to the set limit position.

Additional settings

Option A Adjusting the top position

If adjustment is not possible, go to **Option B**, then to **Step 3**.



Go to the already set top position.

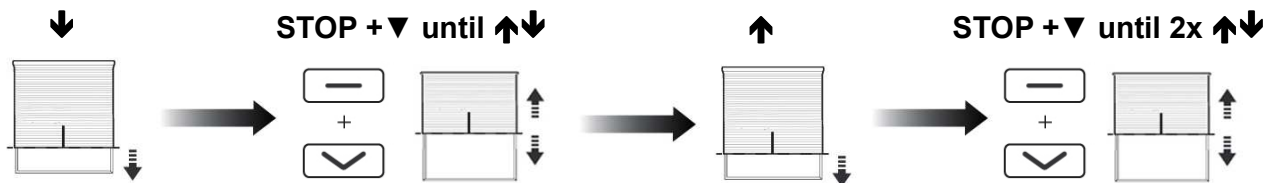
Press at the same time **STOP** and **UP** until the motor moves and beeps 1x.

Go to the new top position.

Press at the same time **STOP** and **UP** button, until the motor 2x moves and 3x beeps.

Adjusting the down position

If adjustment is not possible, go to **Option B**, then to **Step 3**.



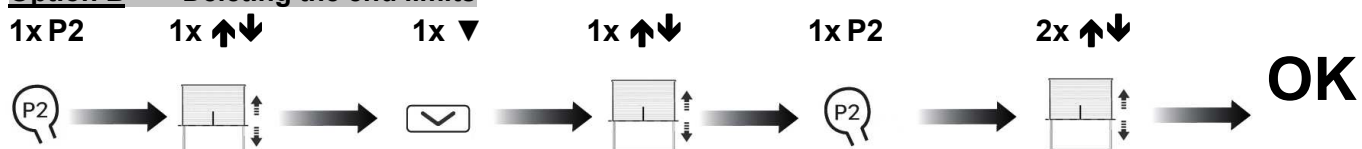
Go to the already set bottom position,

Press at the same time **STOP** and **DOWN** until the motor moves and beeps 1x.

Go to the new bottom position.

Press at the same time **STOP** and **DOWN** button, until the motor 2x moves and 3x beeps.

Option B Deleting the end limits



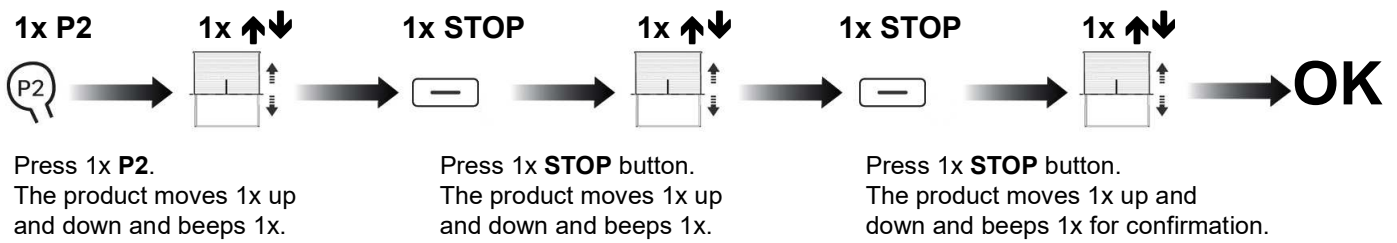
Press 1x **P2**. The product moves up down and beeps 1x.

Press the **DOWN** button. The product moves 1x up and down and beeps 1x.

Press **P2**. The product moves 2x up and down and beeps 1x.

The end positions are now deleted from the memory.

Option C Deleting the third limit position

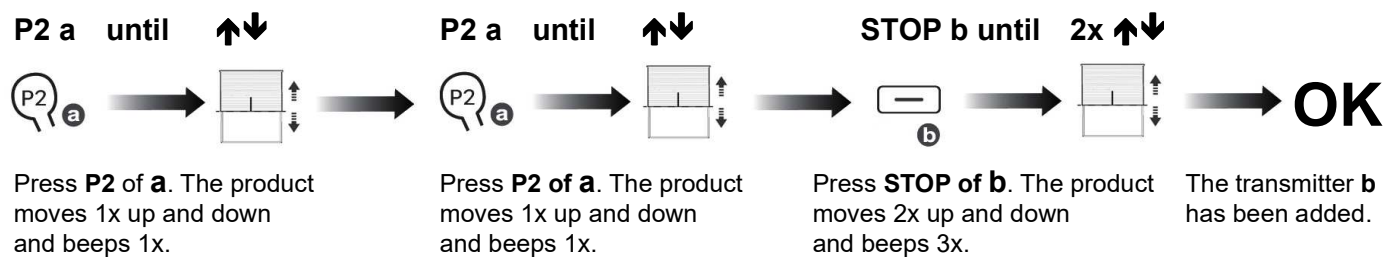


Option D Learn new transmitter/channel while maintaining end limits.

Only possible when end limits are set.

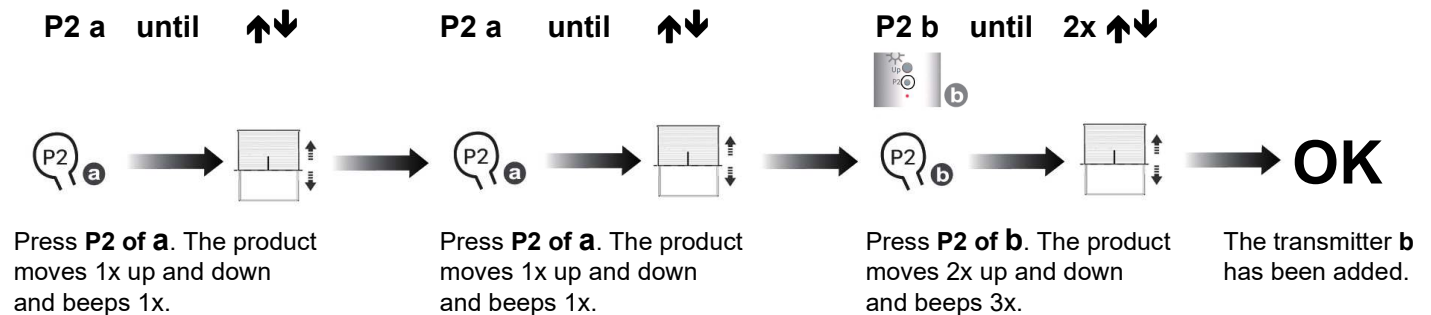
a = Already existing transmitter **b** = New transmitter

Method 1



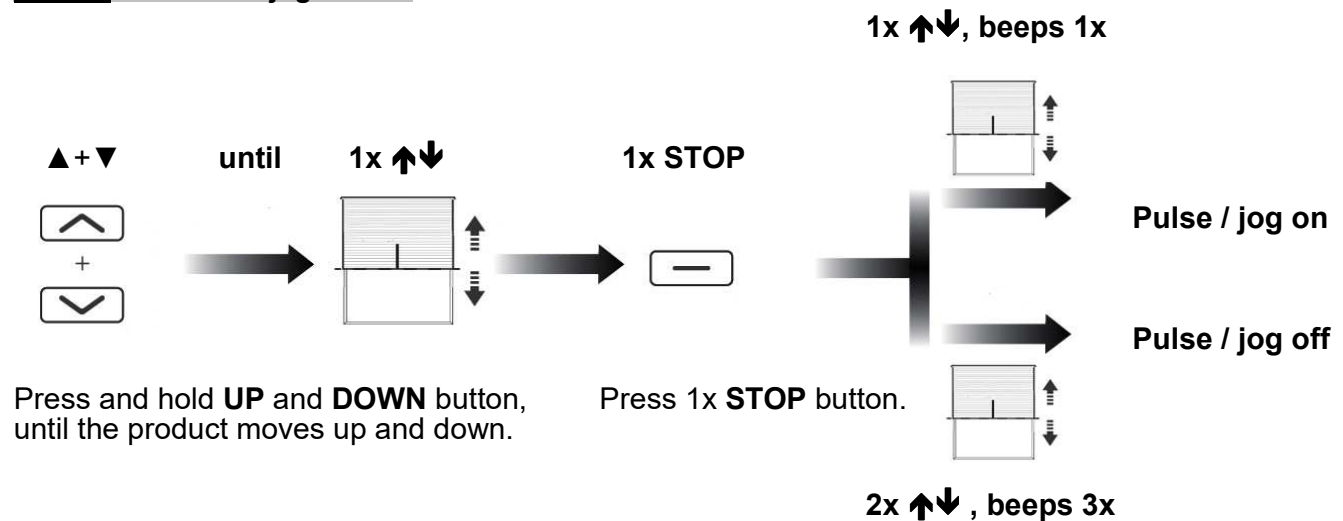
Repeating the above will remove the new transmitter/channel.

Method 2(also sun- and windmeter)



Repeating the above will remove the new transmitter/channel.

Optie E Pulse / jog control



Option F Sun- and windmeter (DD-116H)**Add / remove**

1x P2a 1x ↑↓ 1x P2a 1x ↑↓ 1x P2b 2x ↑↓



The sun and wind meter has been added.

Press **P2 of a**. The product moves 1x up and down and beeps 1x.

Press **P2 of a**. The product moves 1x up and down and beeps 1x.

Press **P2 of b**. The product moves 2x up and down and beeps 3x.

By repeating the above, you can remove the sun and wind meter again.

On / off sun function (Factory setting = on)

1x P2 1x ↑↓ 1x P2 1x ↑↓ 1x ▲ ↑↓



ON: The product moves up and down once and beeps once long.

OFF: The product moves up and down 2x and beeps 3x long.

Press 1x **P2**. The product moves 1x up and down and beeps 1x.

Press 1x **P2**. The product moves 1x up and down and beeps 1x.

Press 1x **UP**.

By repeating the above, you can switch the sun function on or off again.