

Manual Brel 1-channel and 15-channel emitter Type DD-2700H - DD-2702H

Read the manual before you begin the installation. If these instructions are not followed, this may lead to defects and injury in which warranty can't be claimed.

NOTE:

This manual can only be used to connect the hand-held transmitter to the motor, **NOT** to adjust the motor!

For all manuals, visit: www.brel-motors.nl

Technical specifications

Type DD-2700H - DD-2702H

- | | |
|----------------------|---|
| • Battery type: | 3V 1x CR2450 |
| • Frequency: | 433,92MHz |
| • Emission power: | 10 MW |
| • Emission distance: | 200 meter open field, 2 walls 35 meter. |

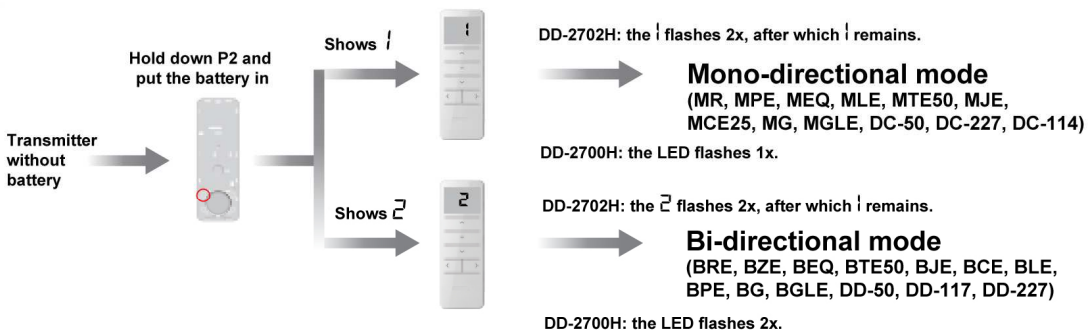
Button specifications

DD-2702H



There are 2x P2 buttons, no matter which one you press.

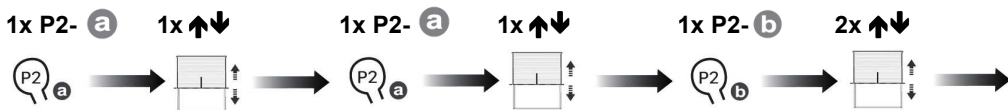
Mono-directional / bi-directional mode switching



If the motor does not respond, try another mode.

Pairing the remote control transmitter in the memory of the motor

METHOD 1



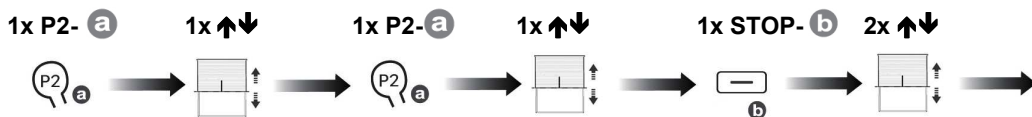
Press 1x **P2** of the existing channel **a**. The product makes 1x up-down movement and beeps 1x.

Press 1x **P2** of the existing channel **a**. The product makes 1x up-down movement and beeps 1x.

Go to the new channel **b**. Press **P2** of the additional channel **b**. The product makes 2x up-down movement and beeps 3x for confirmation.

To delete a channel you have to repeat the above.

METHOD 2 (Bi-directional only)



Press 1x **P2** of the existing channel **a**. The product makes 1x up-down movement and beeps 1x.

Press 1x **P2** of the existing channel **a**. The product makes 1x up-down movement and beeps 1x.

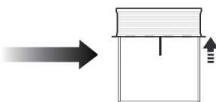
Go to the new channel **b**. Press **STOP** of the additional channel **b**. The product makes 2x up-down movement and beeps 3x for confirmation.

To delete a channel you have to repeat the above.

Adding a replacement handtransmitter, in case of loss/failure of the old hand transmitter

METHOD 3 (Bi-directional only)

Motor voltage 1x ↑↓



Hold STOP until 2x ↑↓



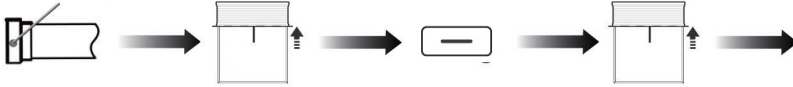
Put voltage on the motor.
The motor's moving back and forth.

Press and hold the stop button until the motor moves back and forth 2x and/or beeps 3x.

METHOD 4 (Mono-directional only) (only possible if the end positions are set)

Press P1 until 1x 

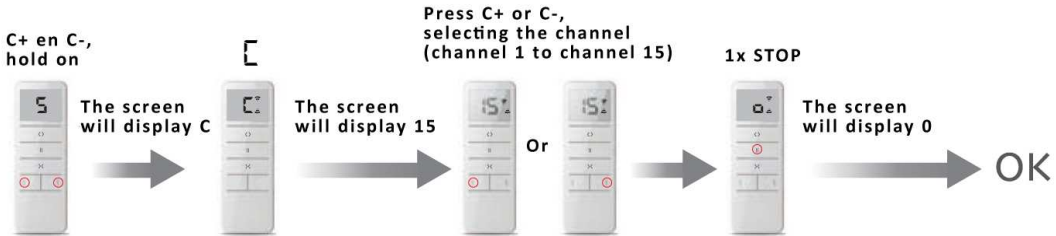
Hold STOP until 2x 



Press P1 until the motor moves back and forth.

Press and hold the stop button until the motor moves back and forth 2x and/or beeps 3x.

OPTION 1 Set up number of channels (only for DD-2702H)



OPTION 2 Usermode

When the remote control is locked, you can operate the motor, but not program it.

