

## Manual Brel 1-channel and 15-channel bi-directional emitter tilt motor

Type DD-2710H - DD-2712H

Read the manual before you begin the installation. If these instructions are not followed, this may lead to defects and injury in which warranty can't be claimed.

**NOTE:**

This manual can only be used to connect the hand-held transmitter to the motor, NOT to adjust the motor!

For all manuals, visit: [www.brel-motors.nl](http://www.brel-motors.nl)

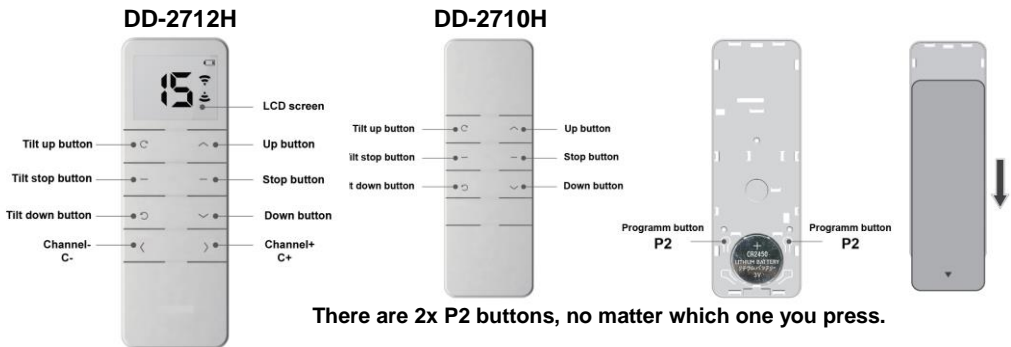
### Technical specifications

- Battery type:
- Frequency:
- Emission power:
- Emission distance:

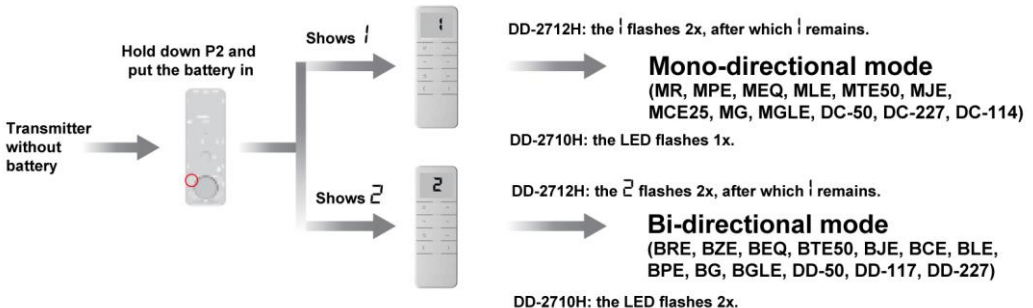
### Type DD-2700H - DD-2702H

3V 1x CR2450  
433,92MHz  
10 MW  
200 meter open field, 2 walls 35 meter.

### Button specifications



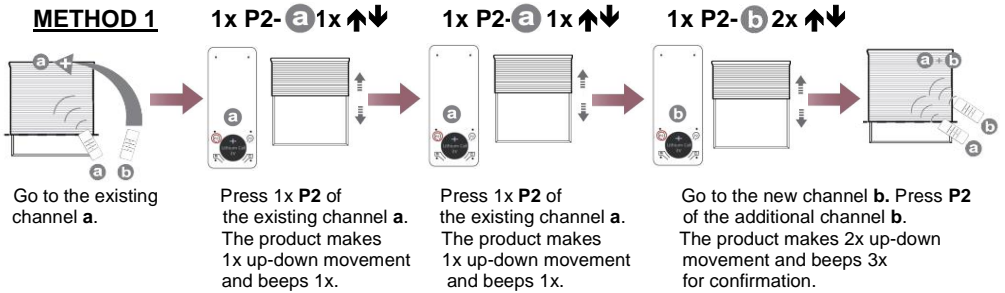
### Mono-directional / bi-directional mode switching



If the motor does not respond, try another mode.

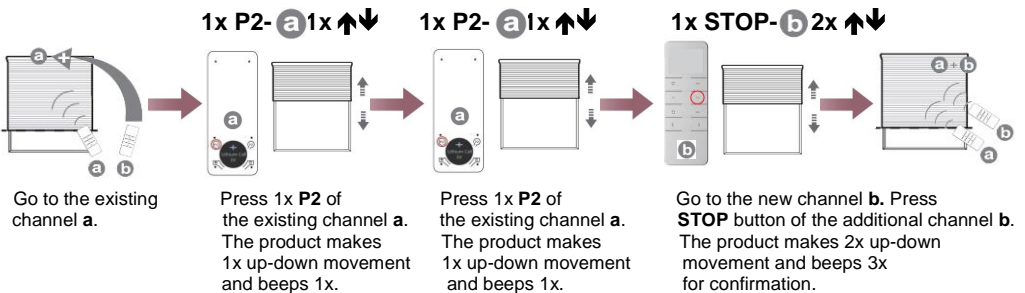
## Pairing the remote control transmitter in the memory of the motor

### METHOD 1



To delete a channel you have to repeat the above.

### METHOD 2 (Bi-directional only)

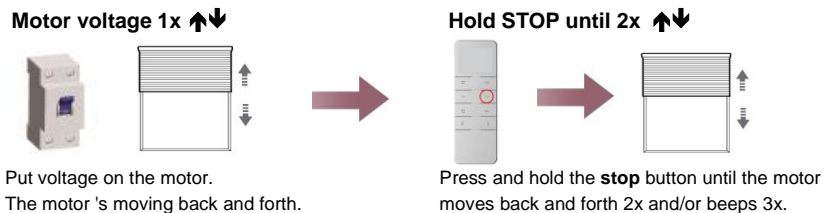


To delete a channel you have to repeat the above.

## Adding a replacement handtransmitter, in case of loss/failure of the old hand transmitter

### METHOD 3 Only Bi-directional

After power has been applied to the motor, press stop within 10 seconds.

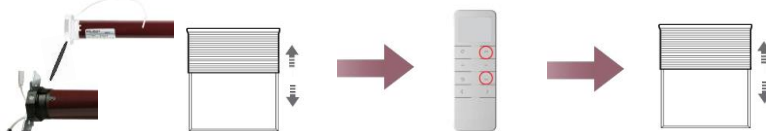


### METHOD 4 Only Mono-directional

(only possible if the end positions are set)

Press **P1** until 1x  $\updownarrow$

$\blacktriangle \blacktriangledown$  simultaneously  $\updownarrow$



## OPTION 1 Set up number of channels(only for DD-2712H)

C+ and C-,  
press and hold



The display  
shows C



The display  
shows 15

Press C+ or C-,  
to select the channel.  
(Channel 1 to channel 15)



OR



1x STOP



The display  
shows 0

OK

In programming mode; press the up or down button. You can stop quickly.  
If you want to change the locked channels, you can repeat above.

## OPTION 2 Button lock / unlock status

When the remote control is locked, you can operate the motor, but not program it.

Hold stop  
Press and hold  
for 15 sec.



Shows L



DD-2712H: flashes L 2x, after wich L remains.

Switch to the locking status

DD-2710H: the LED flashes 1x.

Shows U



DD-2712H: flashes U 2x, after wich U remains.

Switch to the unlocking status

DD-2710H: the LED flashes 2x.