

## Manual Brel emitter Type DC-305 and DC-306

Read the manual before you begin the installation. If these instructions are not followed, this may lead to defects and injury in which warranty can't be claimed.

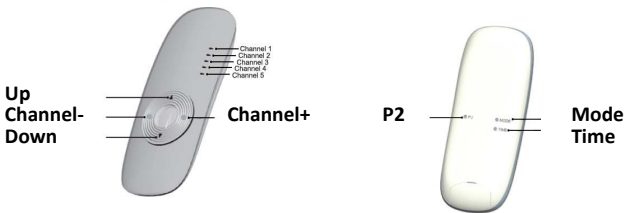
### Technical specifications

- Battery type:
- Frequency:
- Emission power:
- Emission distance:

### Type DC-305 and DC-306

3V CR2430  
433,92MHz  
10 MW  
200 meter open field, 2 walls 35 meter.

### Button specifications



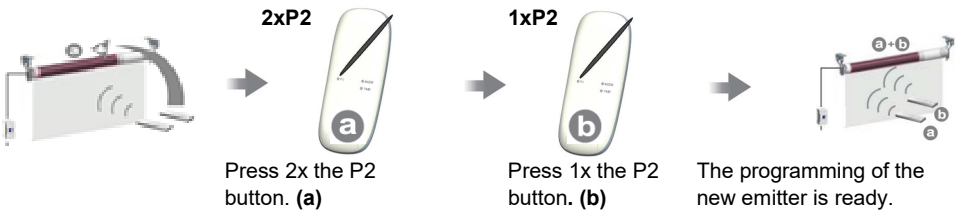
*When all de LED lights burn for the DC-306, all products are then active. (mode and time have only a function on a emitter with a timer)*

### Operates with these BREL motors and receivers:

**Motors:** MR, MEV, MCE, MDE, MLE, MJE, MTE, MEQ, MPE.

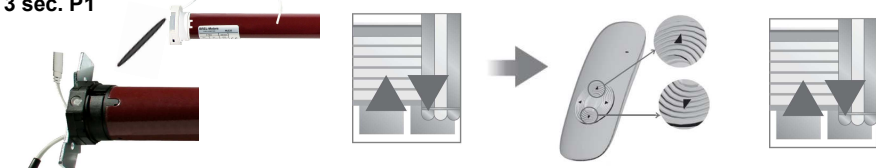
**Receivers:** DC-50, DC-101, DC-109, DC-114, DC-227, DC-292.

### Teaching multiple emitters



**To delete one channel , you must repeat the above operation.**

### Connecting the emitter to these electronic motors; MEV, MCE, MDE, MLE, MJE, MTE, MEQ, MPE. 3 sec. P1



Press **3 sec.** the P1 button until the motor has moved once and (beeps).

Press up and down at the same time (beeps 7x) until the motor moves up and down.