

**Manual Brel receiver
Type DC-50**

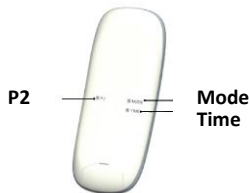
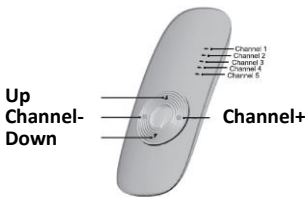
Read the manual before you begin the installation. If these instructions are not followed, this may lead to defects and injury in which warranty can't be claimed.

Technical specifications

Type DC-50

- | | |
|-------------------------------------|-----------------|
| • Voltage: | 230V |
| • Power: | 900W |
| • Speed: | 20cm/sec. |
| • Amperage: | 4A |
| • Radiofrequency: | 433.92MHz |
| • Moisture and dust: | IP55 |
| • Working temperature of the motor: | |
| ○ Normal use: | -10°C tot +40°C |
| ○ Heavy use: | -20°C tot +70°C |

Button specifications



If in the 5 channel receiver all the lights are lid. All the products are operated simultaneously. (mode and time have only a function on an emitter with a timer).

Operates with these BREL motors and receivers:

Motors: MR, MEV, MCE, MDE, MLE, MJE, MTE, MEQ.

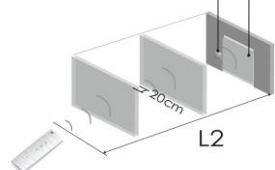
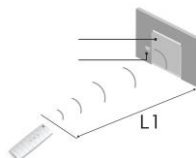
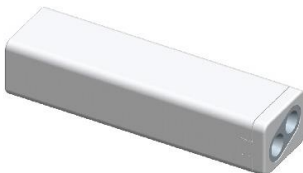
Receivers: DC-50, DC-90, DC-92, DC-94, DC-101, DC-109, DC-114, DC-227, DC-252, DC-253, DC-292, DC-305, DC-306, DC-2702.

Functions

Reach

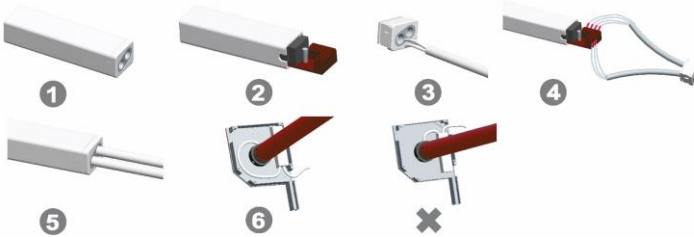
L1 = 100 meter

L2 = 25 meter



Installation receiver

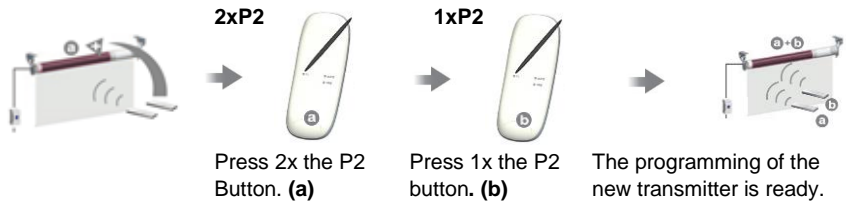
The long white wire is the antenna and may not be connected to the electricity.
Make sure that no moisture can run into the receiver.



Wiring chart

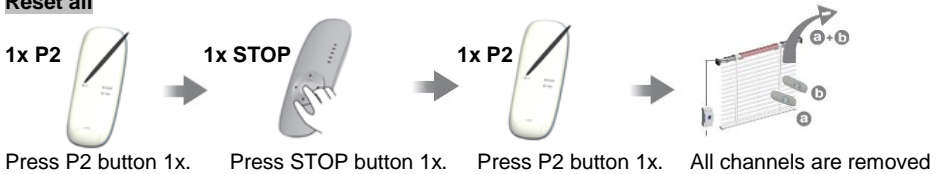


Teaching multiple transmitters

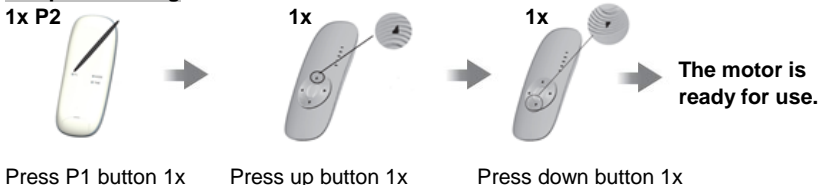


To delete one channel , you must repeat the above operation.

Reset all



The pulse setting



To remove the pulse setting, repeat the above operation.